

MS8226/MS8226T SERIES DIGITAL MULTIMETER

Features:

- Large LCD display, 3999 counts with backlight
- Data hold function
- Auto/manual ranging
- True RMS measurement (MS8226T only)
- Relative measurement
- RS232C PC interface (optical isolated)
- Low battery indication
- Frequency test
- Duty cycle test
- Temperature measurement
- Capacitance test
- Audible continuity test
- Rubber covered case
- Auto power off

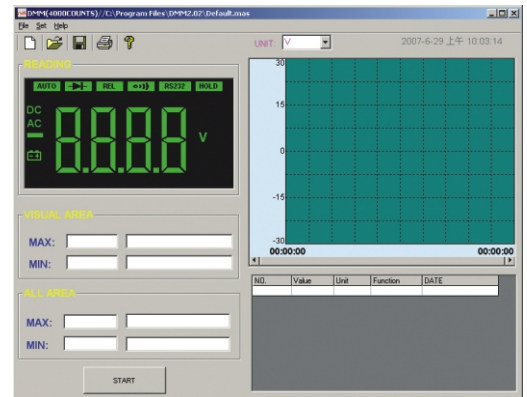


จัดจำหน่ายโดย : บริษัท เอฟเวอร์เทค จำกัด
TEL : (02)8702884-5, (02)4289793-5
Email: sales@evertech.co.th
www.evertech.co.th



MS8226T MULTIMETER

Supplied with software for Windows.
The software interface includes main display area just like DMM LCD display, trend view area, MAX/MIN setting area and data log area.
Data log can be saved as file and printed out.



TRUE-RMS!
RS232C INTERFACE

MS8226/MS8226T DIGITAL MULTIMETER

Technical Data

FUNCTION	MEASUREMENT RANGE	ACCURACY
DC Voltage	400m/4/40/400/1000V	+/- 0.5% (1000V: +/-0.8%)
AC Voltage	4/40/400/700V	+/- 0.8% (700V: +/-1.2%)
AC Current	400μA/4000μA/40m/400mA/10A	+/- 1.5% (10A: +/-3.0%)
DC Current	400μA/4000μA/40m/400mA/10A	+/- 1.2% (10A: +/-2.0%)
Resistance	400/4k/40k/400k/4M/40MΩ	+/- 1.0% (40M: +/-2.0%)
Capacitance	50nF/500nF/5μF/50μF/100μF	+/- 3.0% (50nF: +/-5.0%)
Frequency	5/50/500/5k/50kHz	+/- 0.2%
Duty Cycle	0.1% - 99.9%	+/- 3.0%
Temperature	-20°C - 1000°C	+/- 3.0%
Continuity and Diode Test		
Power	9V(6F22)battery x 1	
Size/Weight	195x92x43mm/380g	

Standard accessories

- 1) Test leads
- 2) Thermocouple
- 3) Battery 9V
- 4) Operation manual
- 5) PC software disk
- 6) Carrying case



RS232C INTERFACE



Glentest

SHANGHAI GLENTTEST ELECTRONICS CO., LTD.
TEST INSTRUMENTS SPECIALIST

International Sales:

Tel: +86 21 85921024 Fax: +86 21 85921514
Address: 401/3, No. 365 Guanglingsi Road, Shanghai 200082, China